



# WORLDWIDE ELECTRIC MOTOR DATA SHEET

## PEWWE7.5-12-254T



HORSEPOWER	7.5		
RPM / POLES	1200 / 6		
VOLTAGE / PHASE	230 / 460 V / 3		
FRAME	254T		
ENCLOSURE / DEGREE OF PROTECTION	TEFC / IP55		
FREQUENCY	60 HZ Suitable For 50 HZ Operation With 1.0 SF		
FULL LOAD SPEED	1175 RPM		
SERVICE FACTOR	1.25		
INSULATION CLASS	F		
FULL LOAD AMPS; 230 / 460	18.8 / 9.41 A (Usable On 208V At 20.8 A)		
LOCKED ROTOR AMPS (STARTING); 230 / 460	127 / 63.5 A		
NO LOAD CURRENT	9.0 / 4.5 A		
NEMA CODE LETTER	H		
EFFICIENCY / POWER FACTOR	<u>LOAD</u>	<u>EFF.</u>	<u>P.F.</u>
	100 %	91.0%	0.82
	75 %	91.3%	0.76
	50 %	90.6%	0.65
DUTY CYCLE	S1 / Continuous		
TORQUE	<u>FULL LOAD</u>	<u>LRT</u>	<u>BDT</u>
	33.5 lb.ft.	170%	280%
SLIP	2.08 %		
NEMA DESIGN	B		
MOMENT OF INERTIA	1.59 lb.ft. <sup>2</sup>		
MAX. TIME LOCKED ROTOR (Hot)	19 Seconds		
SOUND PRESSURE LEVEL	66 dB (A)		
MAX. AMBIENT TEMPERATURE	40° C		
MAX. ELEVATION	3300 Ft.		
TEMPERATURE RISE (At Full Load)	80° C		
DE BEARING	6309ZZ C3		
ODE BEARING	6209ZZ C3		
REGREASING INT. - DE BEARING	7500 Hours		
REGREASING INT. - ODE BEARING	7500 Hours		
GREASE TYPE	SKF LGHP 2		
MOUNTING	F1 (F2 Suitable)		
ROTATION	Bi-Directional		
SHAFT MATERIAL	1045 Carbon Steel		
INVERTER RATING	10:1 CT / 20:1 VT PWM Type		
CONNECTION DIAGRAM	230 / 460 V - 9 Lead Y		
AREA CLASSIFICATION	Class I, Division 2, Groups A, B, C, D		
APPROXIMATE WEIGHT	247 lbs.		



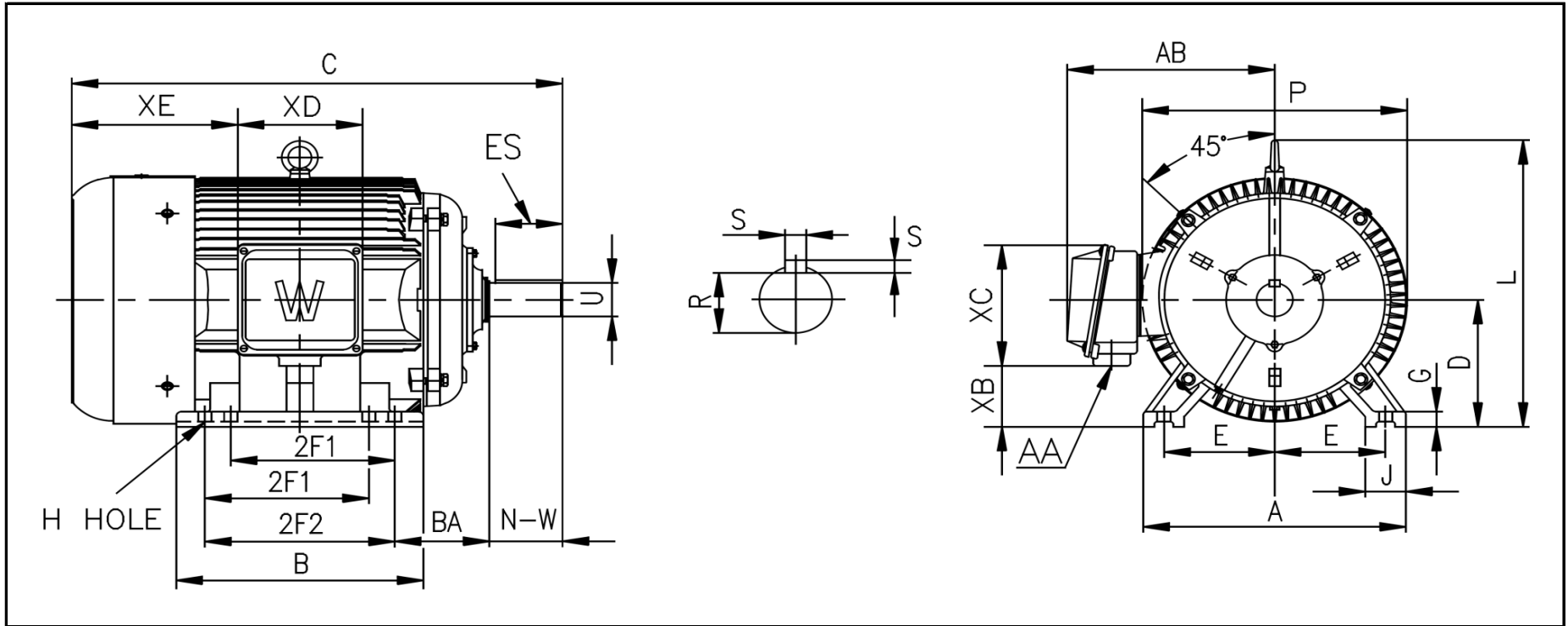
CC006A





# WORLDWIDE ELECTRIC MOTOR DRAWING

## PEWWE-254T



**DIMENSIONS - INCHES**

MOUNTING					A	B	C	D	G	J	P	L	AB
E	2F1	2F2	H	BA									
5	-	8.25	0.53	4.25	12.5	10.3	23.5	6.25	0.79	2.4	12.6	12.9	10.5

KEY		KEYSET	SHAFT		TERMINAL BOX				
S	ES	R	N-W	U	AA	XB	XC	XD	XE
0.375	2.91	1.416	4	1.625	1.5	3	7.4	6.3	8.38